



ESCO SERVICES INC.

7200 19 Mile Road
Sterling Heights, Michigan 48314
1-800-521-1808 fax: 1-586-254-7714
www.escoservices.com

This guide provides instructions on the removal of the Screened Image Displays (SID) and the corresponding installation of the Liquid Crystal Display (LCD) retrofit kits for the single two-sided modular units.

ESCO # 715-1052
OEM # K94061-04-9281

NOTE: SID Main Displays are not compatible with the Pump Controller board that is required for the LCD Retrofit Kit, therefore all SID Main Displays must be upgraded to the LCD Main Displays before putting the Modular head back into service.

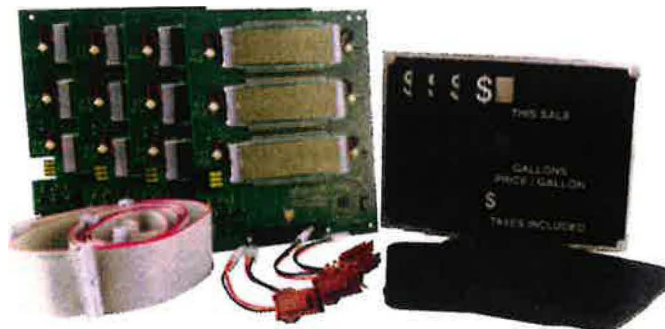
NOTE: The Pump Controller board in a Modular unit with SID Main Displays could be one of the following: T15841-G1, T15841-G2, T18202-G2, or T20005-G2. Henceforth, in this manual, these boards will be referred to as "SID Pump Controller boards" for the sake of simplicity. The Pump Controller boards in a Modular unit with LCD Main Displays MUST be of the following: T18202-G4 (or T15841-G3, T15841-G4, T20005-G4 with appropriate software) Henceforth, in this manual, these boards will be referred to as "LCD Pump Controller" boards for the sake of simplicity.

The 715-1052 (K94061-04-9281) SID to LCD Retrofit DUAL Two-Sided Kit includes the following:

- (4) 715-1053 (M15224A001-8999) LCD Main Display
- (4) 504-0086 (T15175-02) Clear Dial Glass Insert for Main Display
- (4) 212-0882 (R15596) Dial Glass Gasket
- (4) 502-0748 (M15224A001-9000) Power Adapter Cable
- (1) 502-0749 (T17768-G1-9243) LCD Display Ribbon Cable

****** LCD Pump Controller board (and the appropriate software) are also required**** and both are available for outright purchase.**

Model # H111B	T18202-G4 Version Needed	T15841-G3 Version Needed	T15841-G4 Version Needed	T20005-G4 Version Needed
Dual Two-Sided	K93682-G1 V70.8.1 or higher	K93682-G1 V70.8.1 or higher	K93682-G1 V70.8.1 or higher	K93682-G1 V70.8.1 or higher



Removing the Main Display (SID)

Note: Replace all SID Main Displays in the Modular head using the following instructions.

1. Remove the (5) mounting bolts from the bezel (4 are on the outside of the bezel and 1 is behind the access door) and remove the bezel from the Modular head.

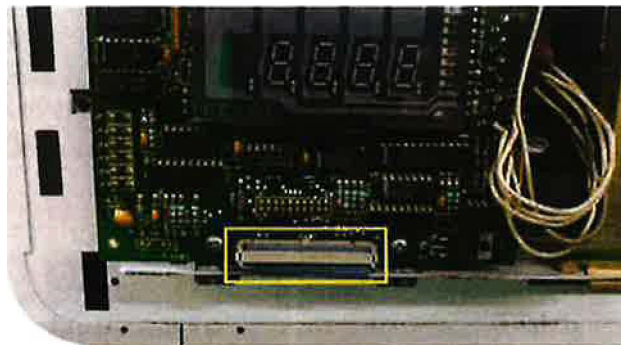
Note: Remove and discard sunshade kits, if present.



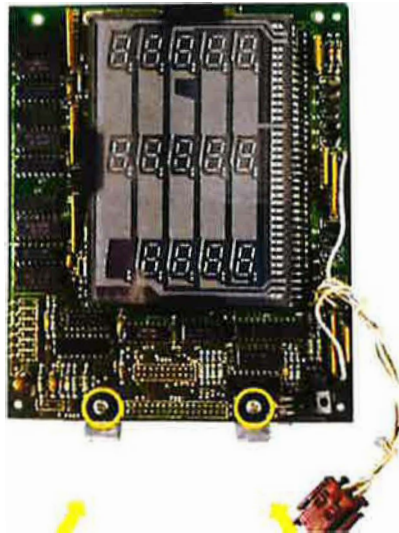
2. Disconnect the P802 Display Power Cable from J802 on the SID Main Display.



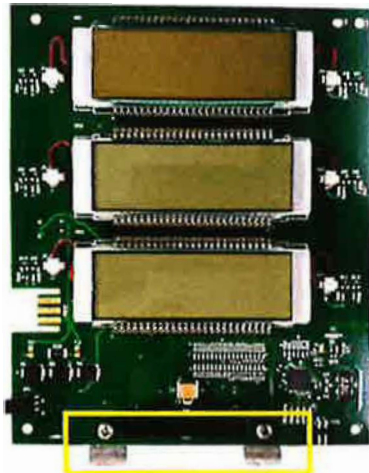
3. Disconnect the P801 Display Data cable from the SID Main Display.



4. Remove the SID Main Display from the Modular head. Remove the mounting bracket from the bottom of the SID Main Display.



5. Install the bracket onto the M15224A001-8999 LCD Main Display and set aside for now.

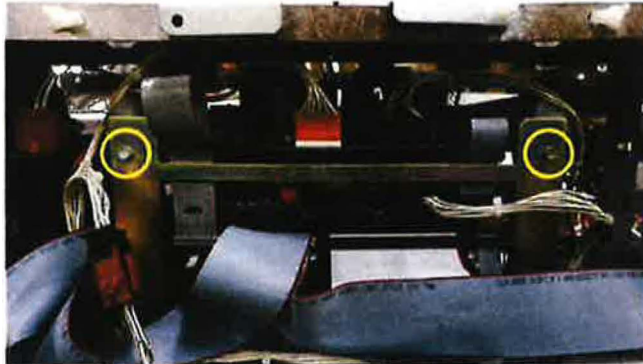


Removing SID Pump Controller Board

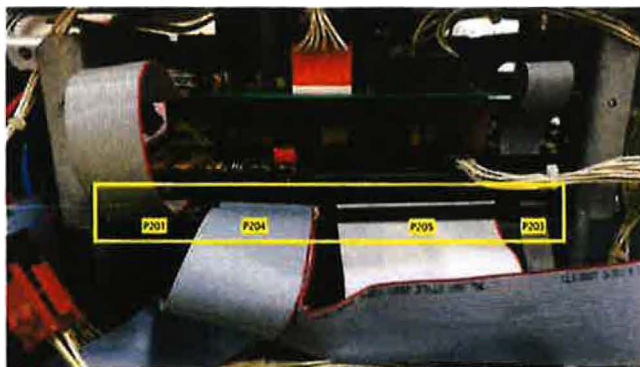
1. To access the Modular Card cage, separate the Operator Panel Assembly from the unit by pinching the plastic standoffs and then lowering the panel.



2. Remove the bracket from the Modular Card cage.



3. Disconnect the cables from the P201, P205 and P203 connectors on the SID Pump Controller board. Disconnect the Display Ribbon cable from the P204 connector and remove the cable from the Modular head to be discarded.

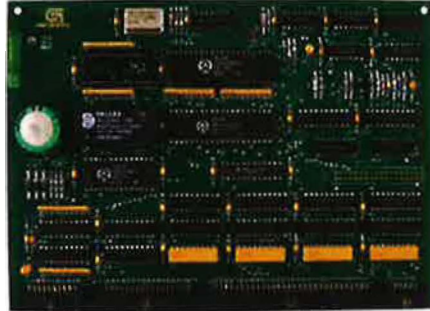


4. Remove the SID Pump Controller board by sliding the board away from the Modular Card cage.



Installing LCD Pump Controller Board

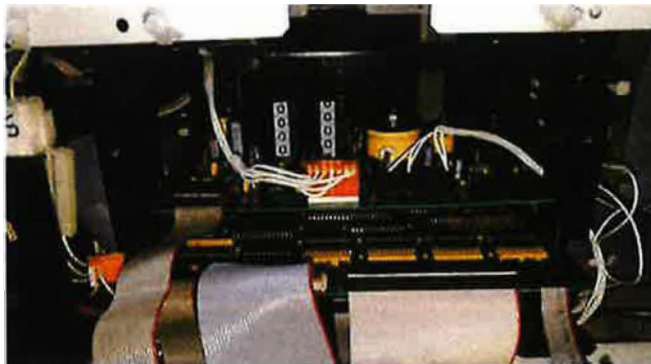
1. Install the LCD Pump Controller board in the Modular Card cage at the same location the SID Pump Controller board was removed.



2. Locate the T17768-G1-9243 LCD Display Ribbon Cable that is provided with the LCD Retrofit Kit. Connect the J204 connector to the P204 connector on the LCD Pump Controller board.

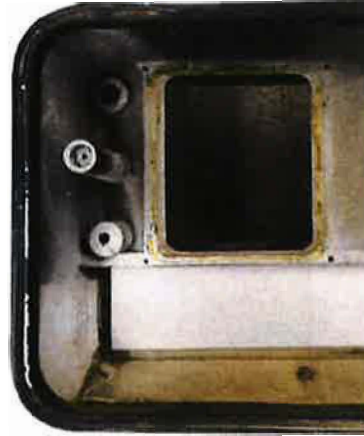
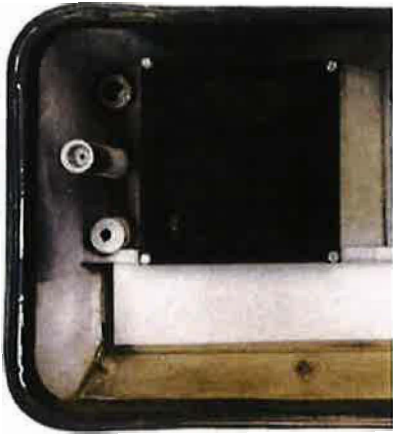


3. Reconnect the appropriate cables to the P201, P205 and P203 connectors on the LCD Pump Controller board.

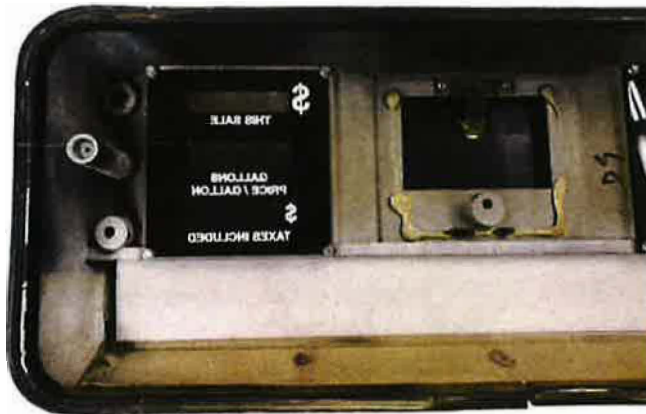


Installing the M15224A001-8999 LCD Main Display

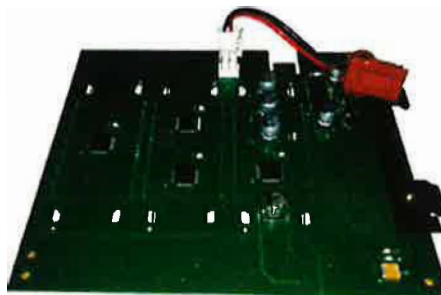
1. Remove the tinted dial glass insert and old gasket from the bezel.



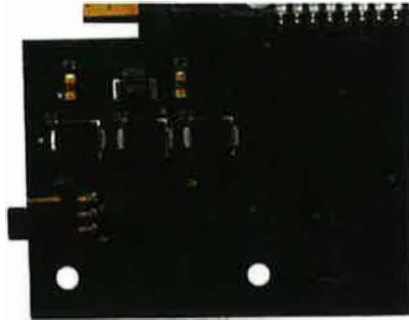
2. Install the Clear Dial Glass Insert and the new gasket onto the bezel.



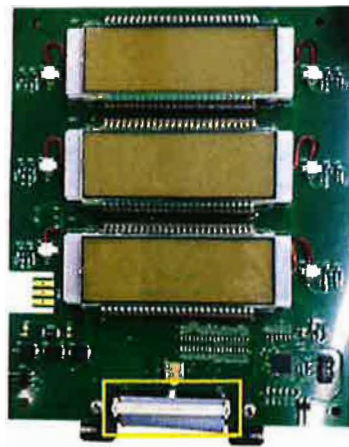
3. Connect the M15224A001-9000 Power Adapter Cable to the P803 connector on the back of the M15224A001-8999 LCD Main Display.



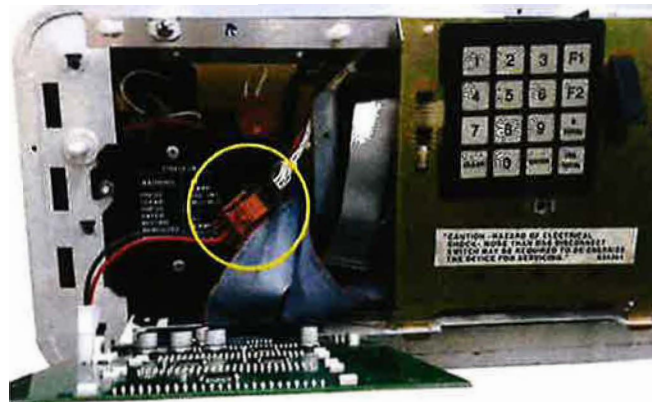
4. The M15224A001-8999 LCD Main Display is ready to be installed on the A-side of the Modular head. If being installed on the B-side, please locate the JP1 connector on the LCD Main Display and remove the jumper from JP1.
Note: If JP1 jumper is placed in the "B" position, a Master Reset will be initiated once power is recycled.



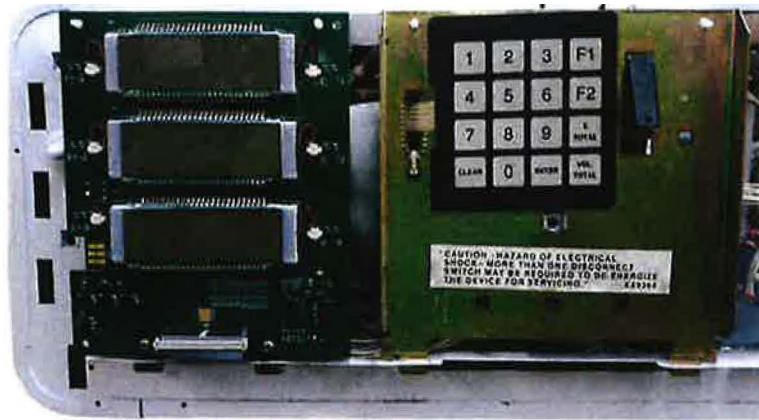
5. Connect the P801 Display Data cable to P801 on the M15224A001-8999 LCD Main Display.



6. Connect the other end of the M15224A001-9000 Power Adapter Cable to the P802 Display Power Cable.



7. Mount the M15224A001-8999 LCD Main Display to the Modular head and reattach the Operator Panel Assembly to the unit.



8. Before replacing the bezels, reapply power to the Modular head to ensure that the LCD Main Displays are working properly.

Reassembling the Unit

1. Replace the bezel by securing the (5) mounting bolts back through the bezel onto the Modular head

